

Perforated roof cladding in Prima Oyster RAL7035 colour with class A1 insulation (to BS EN13501-1)

Anthracite RAL7016 colour gutters, RMPs & gable fascias

Mikrona Eurobond or Trianorm (or similar approved) Class A2 composite panel with class A1 insulation (to BS EN13501-1) in Prima Anthracite RAL7016 colour

Powder coated aluminium entrance doors and windows in RAL 7016 colour. Entrance door leaf frames in Metallic Silver RAL 9006 (Part M)

Coloured insulated loading doors in Anthracite RAL7016

Fire escape doors Metallic Silver RAL 9006

Horizontally laid LFC approved built-up steel cladding system with class A1 insulation (to BS EN13501-1) in Prima Metallic Silver RAL 9006 colour

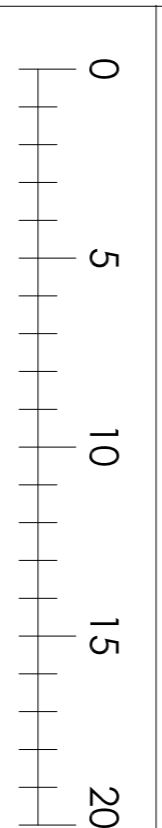
Special RAL 6018 green fastening to jambs & head of entrance doors, windows and loading doors (see photo)

Unit numbers - 3mm powder coated aluminium plate with matching fringes, 1500mm high, RAL6018 colour. Arnel front

Obscured glazing spandrel panels

Top hung opening windows

Main entrance fire lights (circular high quality fitting)



Rev D 5-9-2022 Drawing title amended to include unit 5

Rev C 24-2-2022 Units 1-4 and unit 5 joined together - elevations updated to suit

Rev B 18-1-2022 External materials colours amended

Rev A 22-10-2021 Drawing name and content changed

Notes:  
The drawing is the sole copyright of IAN C KING Associates and no part may be reproduced without the written consent of the above

Chancerygate  
Tolworth

Units 1-5  
Proposed Elevations & Section

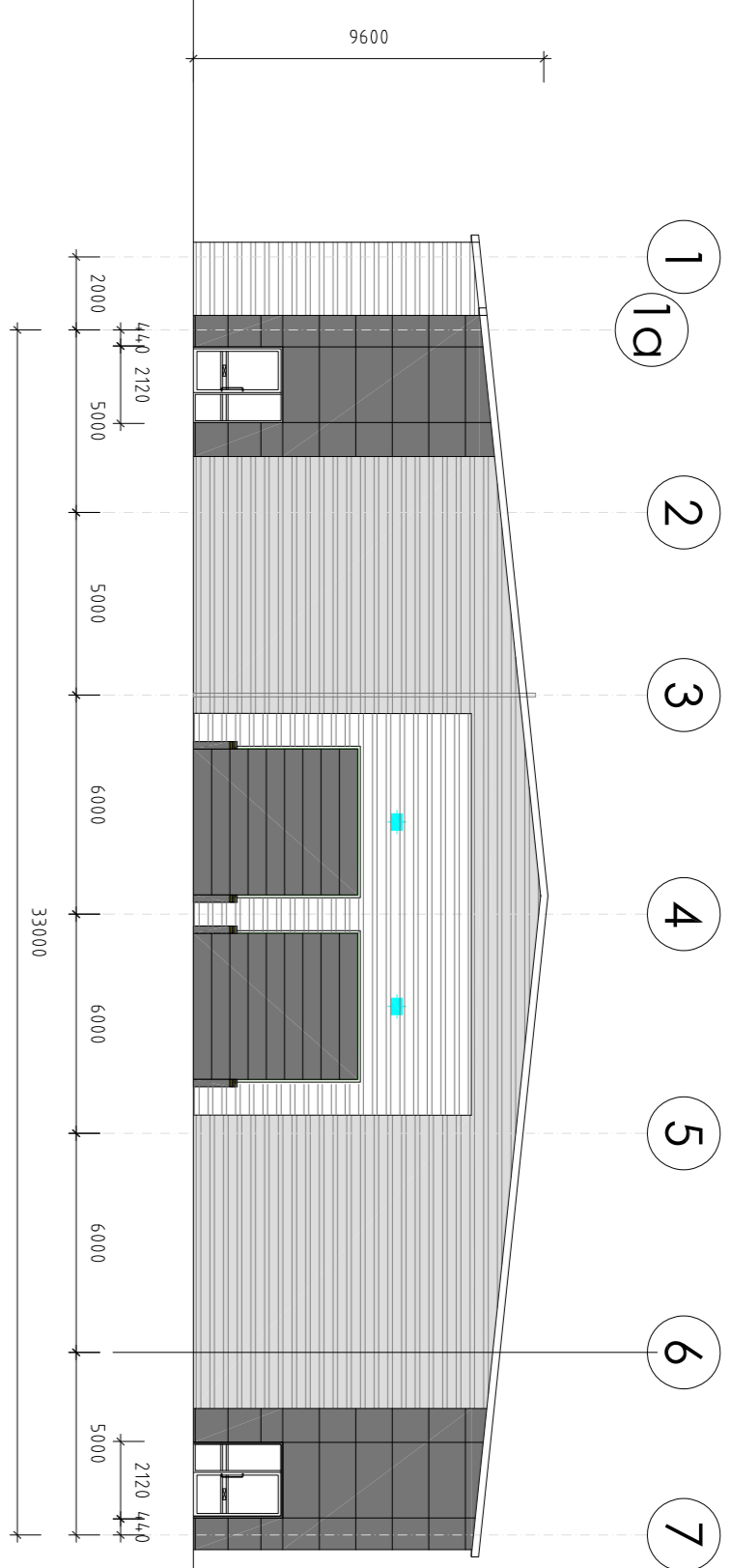
DWG No C-233-TP-06

Date 8-2021 Scale 1:200 (A1) Rev D

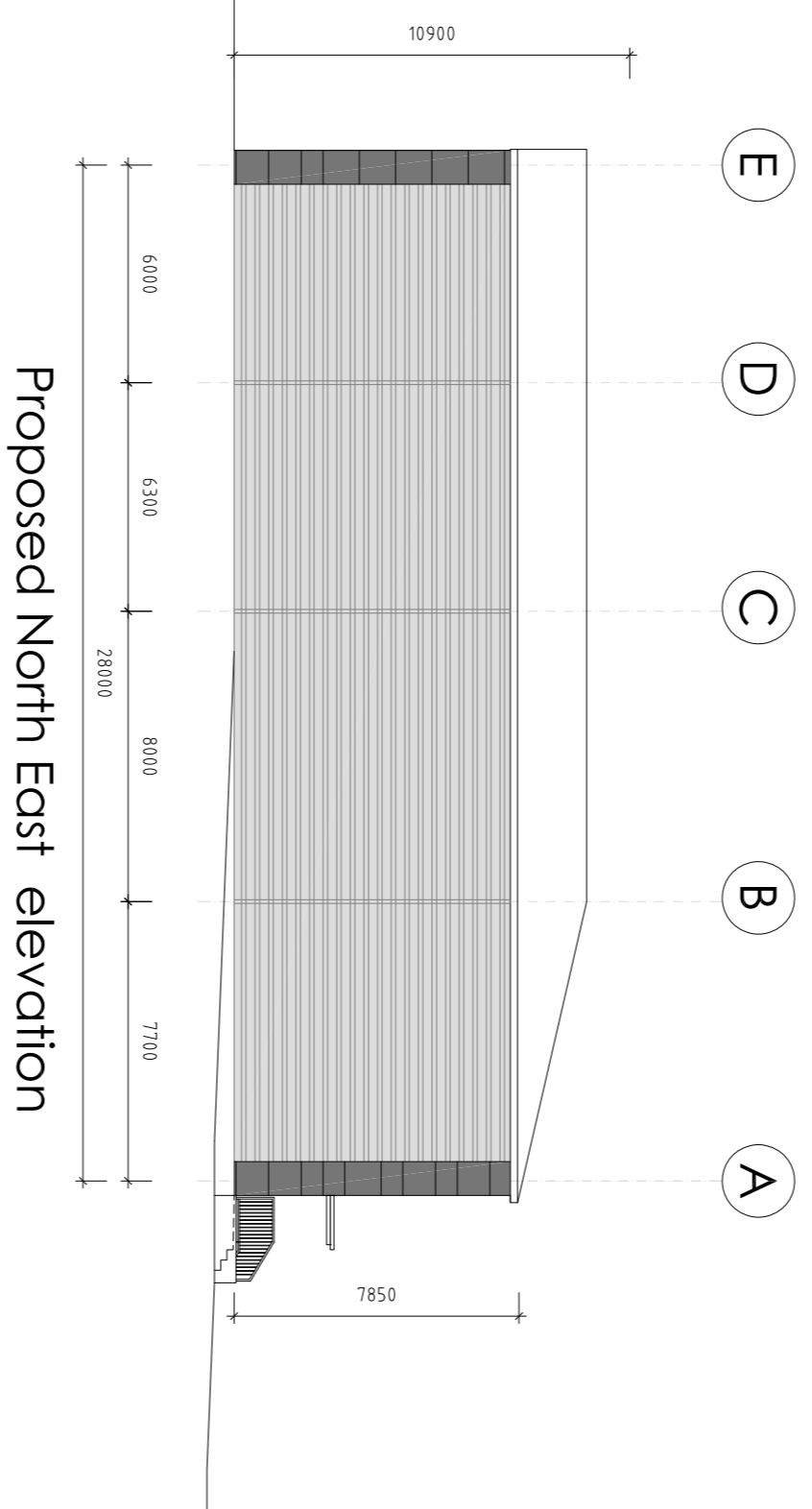
Down Checked Planning Drawing

IAN C KING ASSOCIATES - ARCHITECTS  
45 Buxton Drive  
New Malden  
Surrey KT3 3UX  
Tel: 0754 653 444  
Email: icka@iancking.co.uk  
IAN C KING Associates - Architects the trading name of Gemmy Ltd

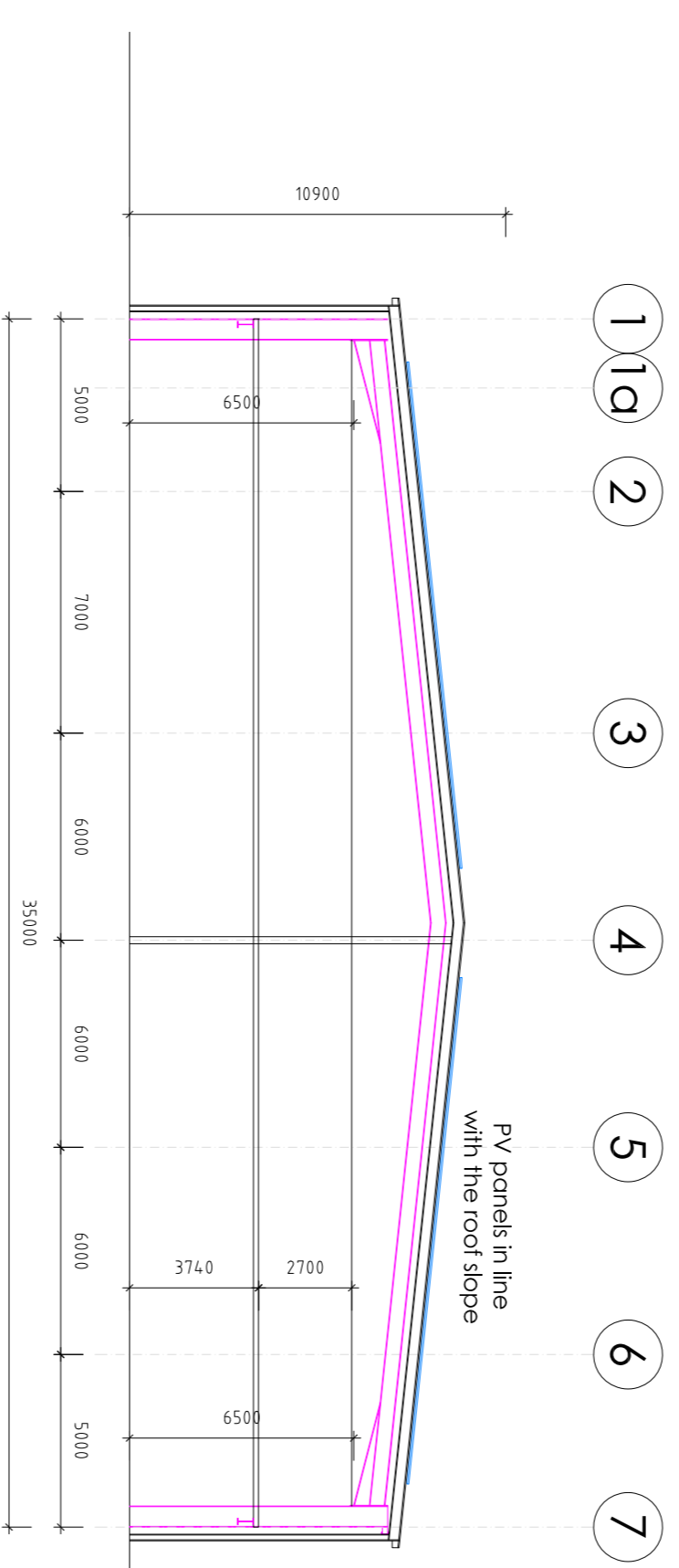




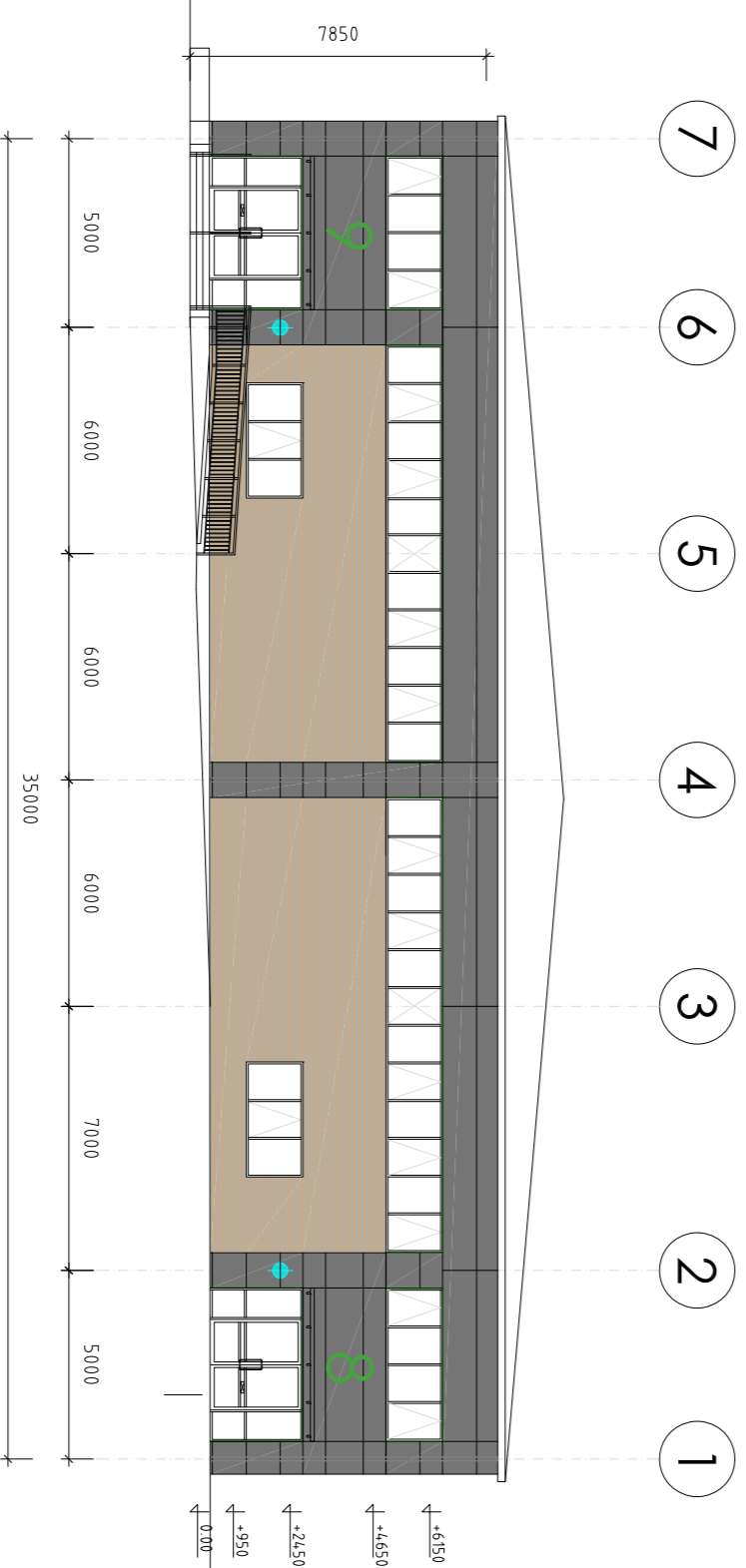
Proposed South-East elevation



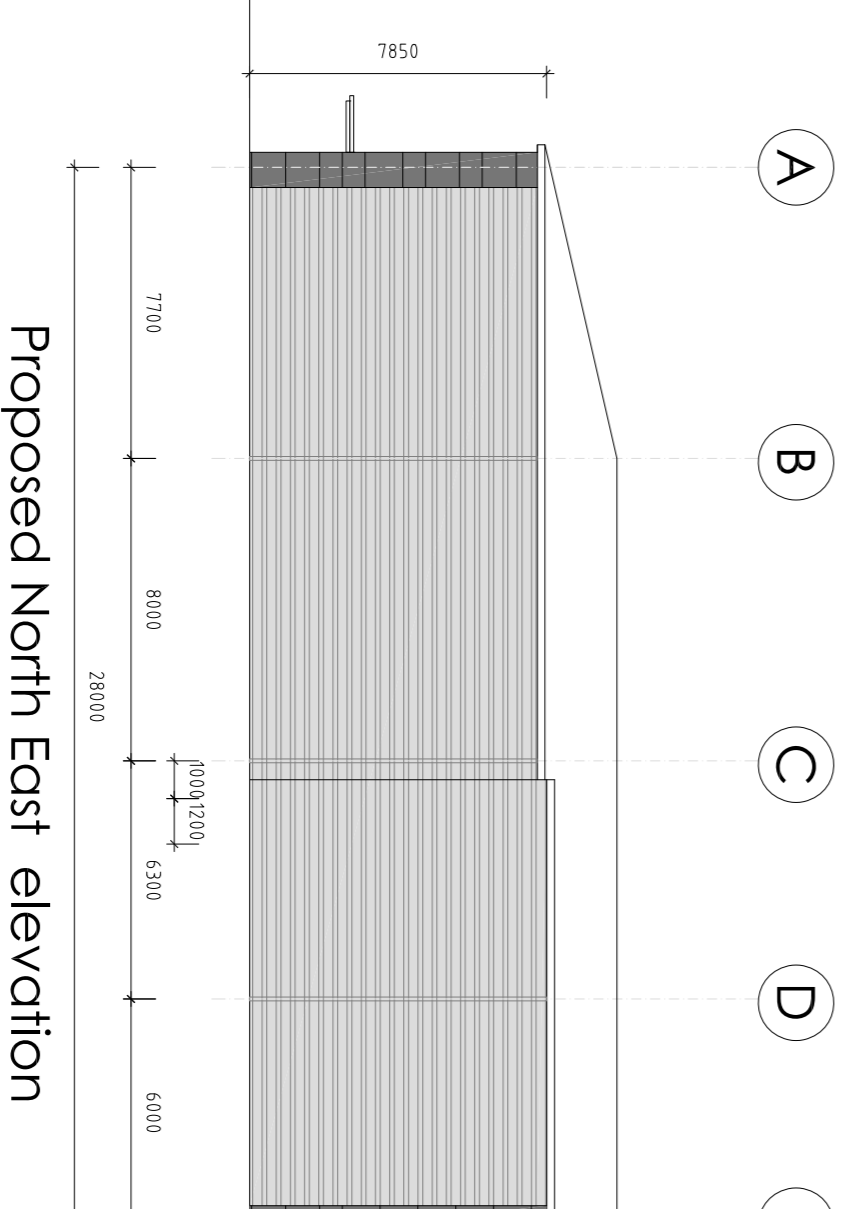
Proposed North East elevation



Proposed Section



Proposed North-West (Red Lion Road) elevation



Proposed North East elevation

Prefixed roof cladding in Prima Dyer RAL7035 colour with class A1 insulation (to BS EN13501-1)  
 Anthracite RAL7016 colour gutters, RWPs & gable fascias  
 Microrib Euciband or Trimoban for similar approved Class A2 composite panel with class A1 insulation (to BS EN13501-1) in Prima Anthracite RAL7016 colour

Powder coated aluminium entrance doors and windows in RAL7016 colour. Entrance door leaf frames in Metallic Silver RAL9006 (Part M)

Coloured insulated loading doors in Anthracite RAL7016

Fire escape doors Metallic Silver RAL 9006

Horizontally laid LPS approved built-up steel cladding system with class A1 insulation (to BS EN13501-1) in Prima Metallic Silver RAL9006 colour

Buff coloured facing brickwork to rear elevation

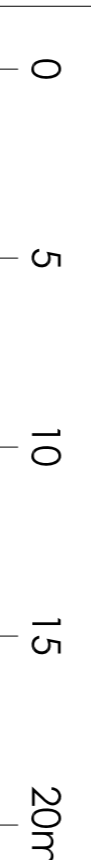
Special RAL 6018 green fastening to joints & head of entrance doors, windows and loading doors (see photo)

Unit numbers - 3mm powder coated aluminium plate with matching fringes, 1500mm high, RAL6018 colour. Arched front

Obscured glazing spandrel panels

Top hung opening windows

Main entrance fire lights (circular high quality fitting)



Rev D

Rev C: 26.5.2022: Unit 9 entrance amended, ground level changes indicated, units 8 and 9 entrance doors changed

Rev B: 21.3.2022: Muzziness moved to north-west side, roof profile changed, elevations updated

Rev A: 18.1.2022: Unit 9 width reduced by 2m, roof changed to monopitch, rear elevation height reduced, windows added and external colours amended

Notes:  
 The drawing is the sole copyright of IAN C KING Associates and no part may be reproduced without the written consent of the above  
 Job  
**Chancerygate  
 Tolworth**

Title  
**Units 8 & 9  
 Proposed Elevations & Section**

DWG No  
**C-233-TP-10**

Date	8-2021	Scale	1:200 (A1)	Rev	C
Down	Checked	Checked	Planning	Down	Down

**IAN C KING**  
 ASSOCIATES - ARCHITECTS  
 45 Buxton Drive  
 New Malden  
 Surrey KT13 3UX  
 Tel: 07354 653 444  
 Email: ic@iancking.co.uk  
 IAN C KING Associates - Architects is the trading name of Gemmy Ltd